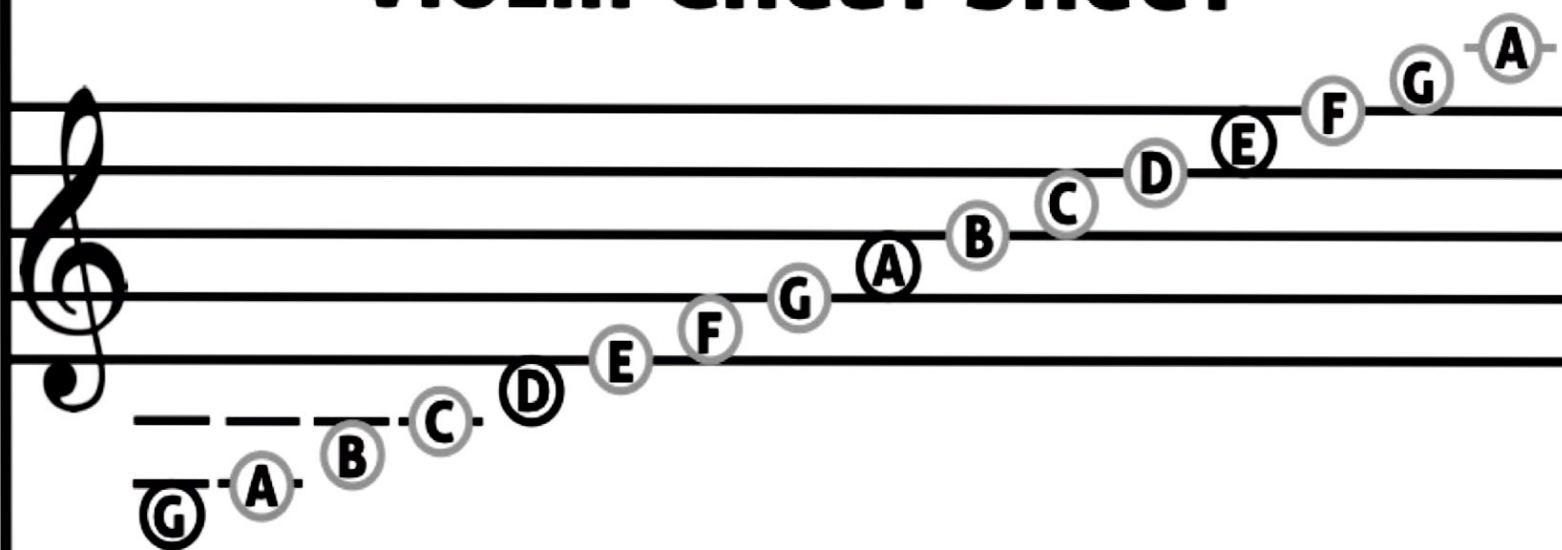
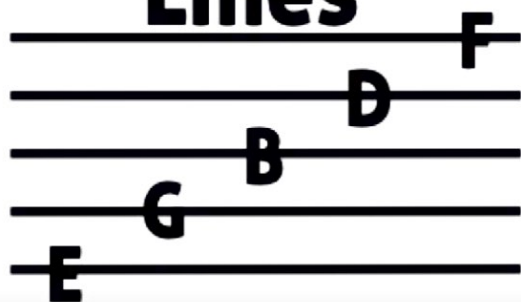


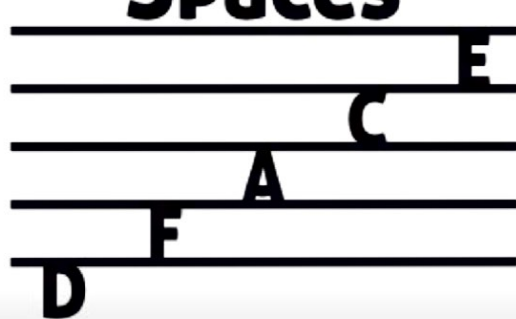
# VIOLIN CHEAT SHEET



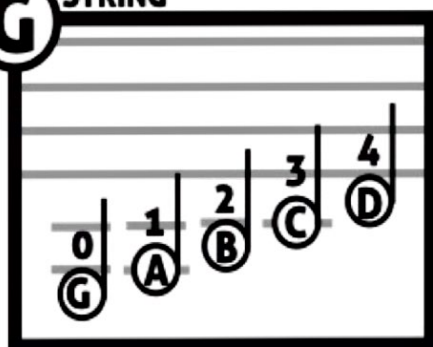
## Lines



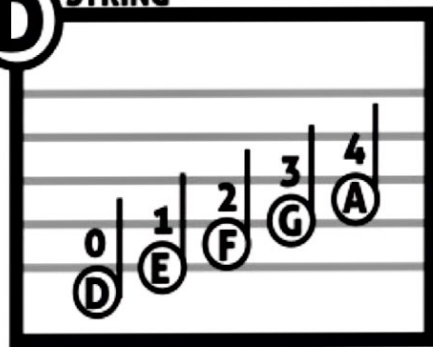
## Spaces



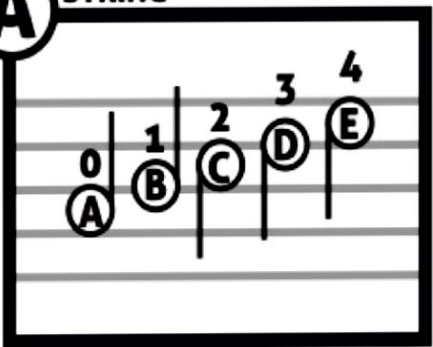
### G STRING



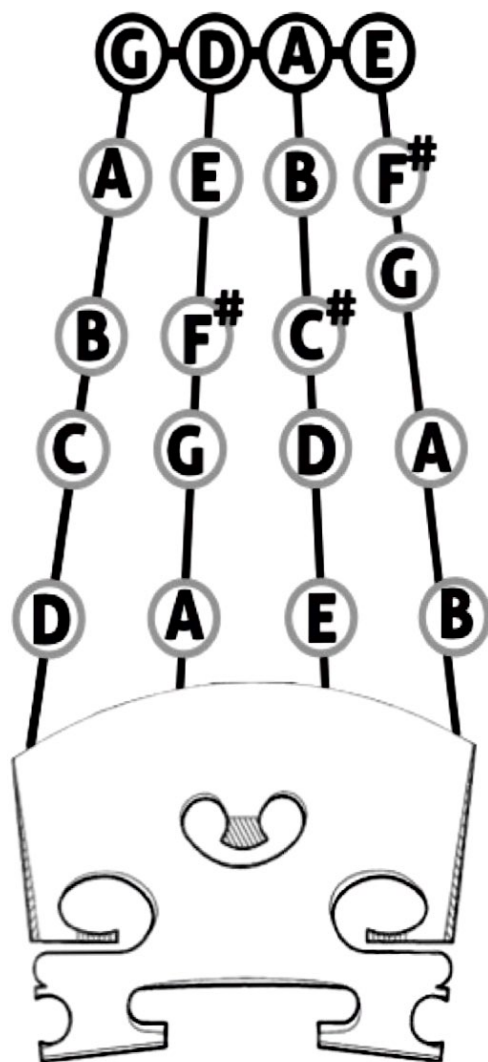
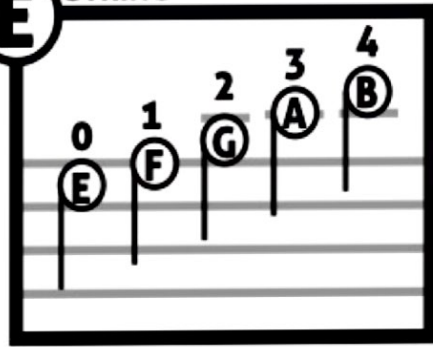
### D STRING



### A STRING



### E STRING



# NOTE VALUES

 **QUARTER NOTE**  
1 BEAT

 **EIGHTH NOTES**  
Set= 1 BEAT

 **EIGHTH NOTE**  
SINGLE= 1/2 BEAT

 **HALF NOTE**  
2 BEATS

 **SIXTEENTH NOTES**  
Set=1 BEAT

 **SIXTEENTH NOTE**  
SINGLE=1/4 BEAT

 **WHOLE NOTE**  
4 BEATS

# COMMON SYMBOLS

 **Down Bow**

*pp* **PIANISSIMO**

**PIZZ.**

**PIZZICATO MEANS PLUCK THE STRINGS**

 **Up Bow**

*p* **PIANO**

**ARCO**

**ARCO MEANS USE YOUR BOW ON THE STRINGS**

 **SHARP**

*mp* **MEZZO PIANO**

**(D.S.)  
Da Segno**

**RETURN TO THE Segno/SIGN,  
PLAY TO THE END**

 **FLAT**

*mf* **MEZZO FORTE**

**(D.C.)  
Da Capo**

**RETURN TO THE START,  
PLAY TO THE END**

 **NATURAL**

*f* **FORTE**

**(D.C. al Fine)  
Da Capo al Fine**

**RETURN TO THE START,  
PLAY TO THE "FINE"**

 **FERMATATA**

*ff* **FORTISSIMO**

**(D.C. al Coda)  
Da Capo al Coda**

**RETURN TO THE START,  
PLAY TO THE CODA**

  
**Crescendo**

  
**Decrescendo**

  
**Coda**

  
**Segno**

**Tie**



**SLUR**

